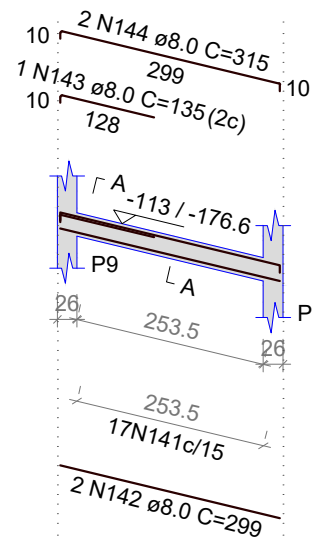
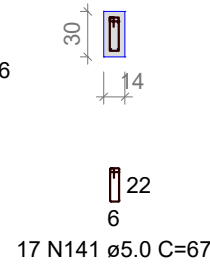


V40 (14 x 30)

ESC 1:100

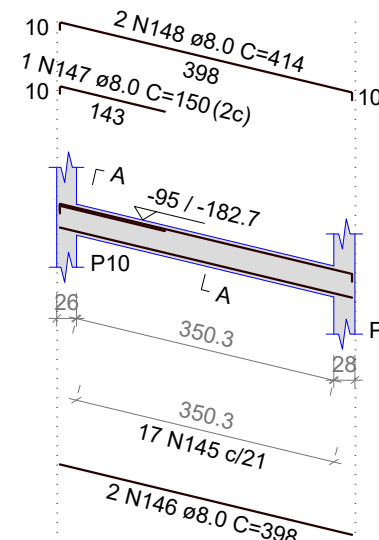


SEÇÃO A-A
ESC 1:50

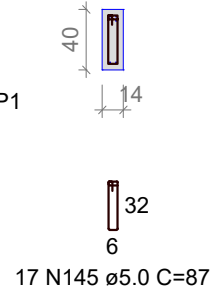


V41 (14 x 40)

ESC 1:100

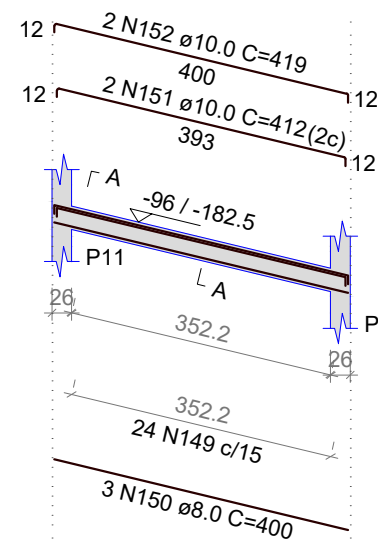


SEÇÃO A-A
ESC 1:50

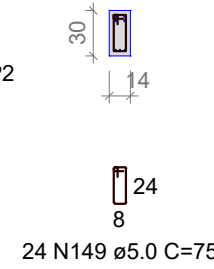


V42 (14 x 30)

ESC 1:100

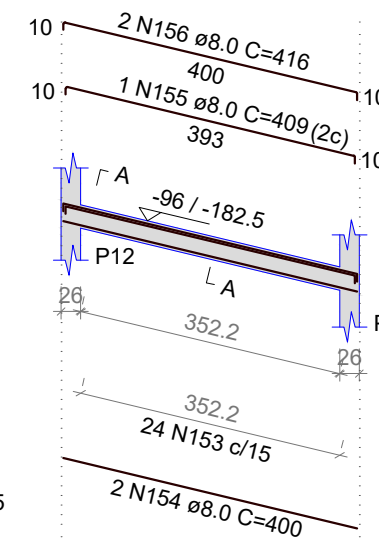


SEÇÃO A-A
ESC 1:50

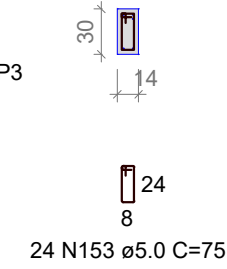


V43 (14 x 30)

ESC 1:100



SEÇÃO A-A
ESC 1:50



RESUMO DO AÇO - VIGAS - TÉRREO

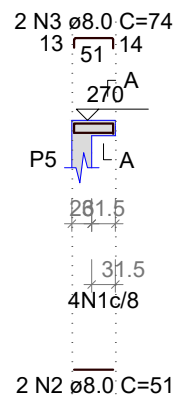
AÇO	DIAM (mm)	C.TOTAL (m)	QUANT + 10% (Barras)	UNIT	PESO + 10% (kg)
CA50	6.3	13.8	2	12 m	3.7
	8.0	541.6	50	12 m	235.1
	10.0	119.9	11	12 m	81.3
CA60	5.0	628	58	12 m	106.5
PESO TOTAL (kg)					
CA50	320.1				
CA60	106.5				

Volume de concreto (C-25) = 5.84 m³
Área de forma = 102.11 m²

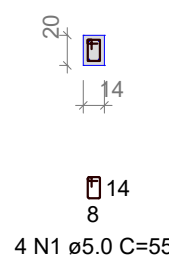
VIGAS TÉRREO

V1 (14 x 20)

ESC 1:100

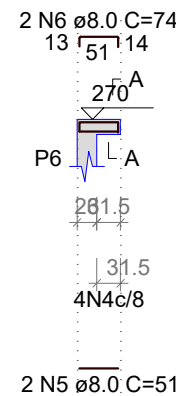


SEÇÃO A-A
ESC 1:50

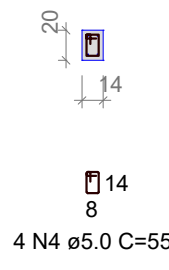


V2 (14 x 20)

ESC 1:100

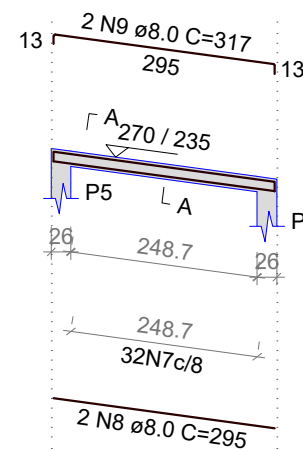


SEÇÃO A-A
ESC 1:50

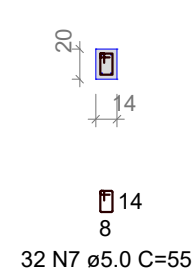


V3 (14 x 20)

ESC 1:100

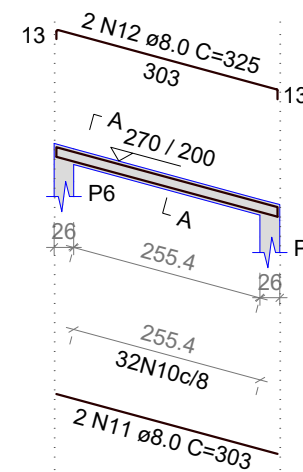


SEÇÃO A-A
ESC 1:50

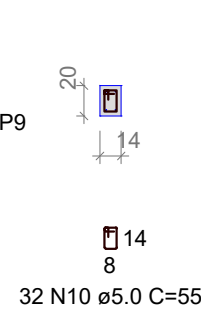


V4 (14 x 20)

ESC 1:100

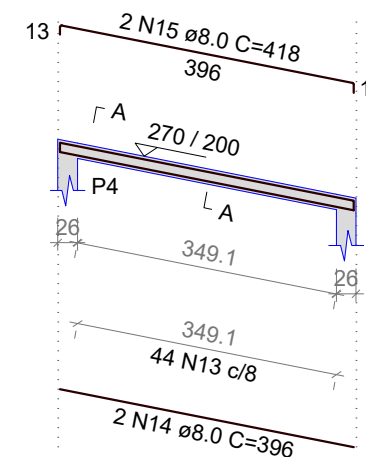


SEÇÃO A-A
ESC 1:50

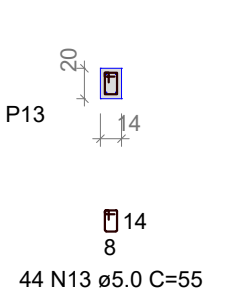


V5 (14 x 20)

ESC 1:100



SEÇÃO A-A
ESC 1:50



VIGAS TOPO



CERTA
Consultoria Técnica e Engenharia

Jayme Rodrigues Macedo
Engenheiro Civil
Responsável técnico
(47) 99242-3022
certacte@gmail.com

Proprietário:

ALEXANDRE HENRIQUE SCHOLL

Endereço:

Rua Henrique Michels
Velha/Blumenau/SC